

Lt. Governor Candidate

Ramona Walsh

D001 Atlanta Professional section

Previous Positions

- FY2017 – Atlanta section Secretary
- FY2016 – Atlanta section Secretary
- FY2011 – Atlanta section Section Rep
- FY2009 – Atlanta section COR
- FY2008 – Atlanta section COR
- FY2008 – Region D Nominating Committee member
- FY2004 – Georgia Tech collegiate section President
- FY2003 – Georgia Tech collegiate section Treasurer



Candidate Statement

Ramona Walsh would be honored to serve as the Region D Lt. Governor to assist Region D officers and collegiate & professional sections in the Society's transition time of dissolving regions in FY18. She wants to see a successful future state of SWE! By working with the collegiate leaders to identify concerns/opportunities, she can work with Andrea, the Region D Governor, to escalate these to the Society to minimize disruptions and frustrations amongst our members!

From Ramona's previous experience as President of Georgia Tech's collegiate section, she can provide guidance and support to the collegiate leaders in Region D. Ramona enjoys mentoring students and has served as a long-term mentor to students at Georgia Tech and is currently a Co-op coordinator for a sector within Kimberly-Clark.

Although this role previously served as a stepping stone to Governor, she can would like to use her experience from this role to apply for the SWE Membership Committee in FY2019.

Thank you for your consideration as Region D's Lt. Governor!

Candidate History

Ramona Walsh is currently a Senior Product Engineer at Kimberly-Clark Corporation (K-C). She has held a variety of roles over 11 years including Material Scientist and Process Engineer. She serves as the K-C SWE Co-chair and manages the K-C Professional Engineering Co-op Program.

Ramona Walsh has served as a Section Representative 3 times, including during the transition from Council of Representatives (COR) to Section Representatives, as well as a Atlanta liaison to Georgia Tech. Ever since she joined SWE as a student in 2000 she has enjoyed volunteering and growing into leadership roles. Ramona was active in the Georgia Tech collegiate section and served as president in FY2004. During her tenure her and her leadership team expanded programming to support a growing section of >150 collegiate members! Outside of SWE, Ramona has held leadership roles in K-C's Womens Network, Georgia Tech organizations and Junior League.

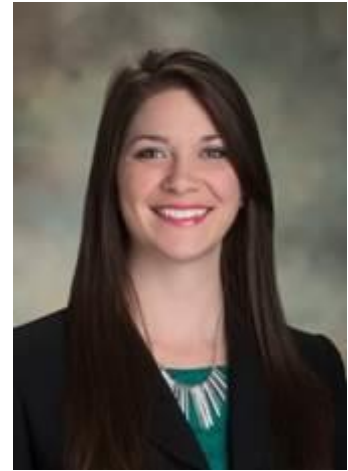
Lt. Governor Candidate

Christi Fiorentini

Atlanta

Professional positions held

- Atlanta Section Representative, FY14, FY15, FY16
- Region D Awards Chair, FY15, FY16



Candidate Statement

I would like to be Lieutenant Governor to continue my involvement in SWE and be involved in the smooth transition out of region leadership. As a former collegiate member who has graduated twice from Georgia Tech, I am interested in continued work with the collegiate sections and understanding how they fit in to the new society structure. This position would allow me to be mentored and to mentor in return.

Candidate history

I graduated from Georgia Tech with a degree in Mechanical Engineering in 2010. While at Tech, I was a SWE member. I got involved in the Atlanta section through outreach events, and served as the Wow! That's Engineering project lead, and a summer camp day coordinator for Lockheed Martin. I served as a section representative for Atlanta for 3 years, and as Region D Awards Chair for 2 years.

Region D Representative to Nominating Committee Candidate

Laura Gimpelson, P.E.

Nashville Section



CURRENT/PREVIOUS SWE POSITIONS

- FY 2010/17: Region D Representative to National Bylaws Committee
- FY 2016: Chair, Nominating and Tellers Committees, Nashville section
- FY 2015: Chair, Region D Conference Continuing Education Seminar
- FY 2012: Vice-chair, National Tellers Committee
- FY 2010: Chair, Central Florida Section
- FY 2007/09: Chair: National Bylaws Committee

Candidate statement:

I am running as Region D's representative to the Nominating Committee to continue Region D's role as a productive supplier of SWE National leaders. Various members from the region have led the society in furthering its goals to encourage women to become engineers and leaders. I will also give a voice to those members that wish serve on the national level who have taken the path less travel in gaining leadership experience at the local and region level.

History:

Ms. Gimpelson is a Fellow and life member of SWE and the American Institute of Chemical Engineers (AIChE). She is currently serving as the Region D's Bylaws Coordinator and Representative to the National Bylaws Committee. She joined SWE as a collegiate member in 1975, where she started her SWE career as a section secretary. Since becoming a professional member, Laura has held SWE leadership positions at the local and national level. Since Fiscal Year 2005, Laura has been a member of the national bylaws Committee and served as chair from FY 2007 to FY 2009. In FY 2012, she served on the national Tellers Committee and was promoted to chair in FY 2013.

Professionally, Laura is President of LG Environmental Engineering, a certified woman-owned engineering firm. Her company provides sustainable solutions to address compliance and remediation challenges to private industry and public entities. She graduated from Georgia Institute of Technology, where she earned her Bachelor of Chemical Engineering. Laura is registered engineer in Florida, Georgia, Tennessee and Texas.

Senator Candidate

Atoosa Vaziri

Section: D-11, Central Florida

* List of previous positions held

Director/V.P. of Membership Initiatives



Statement

I have been involved at the section level since 2009. I would like to contribute at a higher level to SWE and be involved in decisions that shape the progress of the SWE missions for all sections in my region. I have great communication skills and would like to utilize this and other skills as a region D senator to represent the voice of the region on SWE issues and developments.

I believe the different positions that I have held throughout my professional career will give me the insight to contribute to policies set by SWE to help members realize the SWE mission.

History

Atoosa was nominated by Women of Color Science STEM group for the Outstanding Achievement Award and received the 2012 Technology Rising Star Award. She was nominated for the SWE Emerging Leader Award at the Central Florida 2014 E-Week Banquet. Ms. Vaziri is the recipient of 8 technical excellence awards from General Dynamics during her 9 years of employment. Atoosa received General Dynamics Mission Systems President's award for community volunteering for 2016.

As an Engineering Project Manager at General Dynamics, she leads multiple multi-million dollar projects consisting of cross-functional teams developing cutting-edge training products for the DoD. She provided technical support and guidance for projects through the full project lifecycle. She led process improvement initiatives across divisions and serves as a Leadership Council advisor. Atoosa has served as the Vice-President from 2010-2013. Atoosa also serves on the board of directors for Girl Scouts Citrus Council as their STEM advisor.

Senator Candidate



Cassandra L. Bayer

Central Savannah River Area Section (D018)

SWE Offices and Experience (1997 – present):

SWE Section Secretary (8 years)

SWE Section Treasurer (2 years)

SWE Section President (7 years)

SWE Section Vice President (3 years)

SWE Section Representative (6 years)

Region D Representative to the National Nominating Committee (2 years)

Region Professional Senator (4 years)

Candidate Statement

Since becoming a SWE member in 1997, I have participated in National and Regional Conferences, assisted in organizing Introduce a Girl to Engineering and National Engineers Week Banquet, and held several section officer positions. As one of the Region D senators, I would be our voice within the society.

As a SWE life member, I am concerned about our Society and feel that I need to get more involved in SWE at the Regional level.

Candidate History

Cassandra is a Contracting Officer at Engineered Resources. She serves as point of contact for all new and existing contracts and reviews requests for proposals and quotation.

Previously, she was a Project Manager with Konecranes Nuclear Equipment and Services. She was responsible for project management leadership for large projects. Previously, she worked for Savannah River Nuclear Solutions and Bechtel Savannah River. Cassie worked at SRS for 18+ years and has experience in project management systems engineering, waste disposal, and environmental compliance.

Ms. Bayer holds a BS in Environmental Engineering from University of Florida and a MS in Environmental Engineering from Clemson University.

Cassie held both local and regional officer positions and served a 2-year term on the National Nominating Committee. She is currently the Region's Senator and both CSRA Section President and Section Representative. She is PMI member since 2007 and served as VP of Communications for 3 years.

Senator Candidate

Wendy Cocke

Atlanta – D001



* List of previous positions held (if any):

- Region D Conference Planning Committee
- Chair/Co-Chair (2007-present)

National Program Development Grant

- Committee Chair (2010-2012)
- Member (2009-2010)

Atlanta Professional Section

- President (2007-2010)
- Treasurer (2005-2007)
- Secretary (2003-2004)

Georgia Tech Collegiate Section

- President (1999-2001)
- Member (1998-2002)

Candidate Statement

During my almost 20 years in SWE (and specifically Region D), I have seen many organizational changes and love to watch the Society evolve to meet the changing needs of the membership and the greater community. At this point in our Society's history, I look forward to participating in aligning the strategic vision and making progress towards it. I have been out of the direct section leadership for a few years due to family commitments and look forward to bringing a balance of history and fresh ideas to the Senate in this time of change.

Candidate History

Wendy Cocke is the Associate Director of Product Supply Strategy at Halyard Health, where she leads the gross margin improvement team, collaborating with manufacturing and research to ideate, prioritize, and execute cost improvement projects across all businesses and facilities. Wendy earned her B.S.ChE from Georgia Tech in 2002, where she served as President for 2 years. As a leader in the Atlanta professional section, she grew the section by driving a culture change from a technically-focused group to a group inclusive of all engineering careers. In Region D, she standardized conferences and established the conference bank account as a leader of the conference Planning committee. At the Society level, she led the creation of standard forms and metrics to streamline the approval process, allowing the PD Grant committee to double the funding awarded to local sections (\$100k) while she was chair.

Secretary Candidate



Emily Huber

D058/ University of Florida (Currently still enrolled in this section until the end of my collegiate position, and then I will be a part of Space Coast)

Positions Held

- Region D Collegiate Senator
- Section President, University of Florida
- Vice President of Internal Affairs, University of Florida
- Mentoring Chair, University of Florida

Candidate Statement

I greatly enjoyed my involvement with SWE as a collegiate member and leader. I found a way to support women in STEM by creating lasting friendships through mentoring, professional development, and learning. Fortunately this year I have been given the opportunity to serve as the Region Collegiate Senator. Currently the time is bitter sweet as I graduated in December and can no longer serve in a collegiate role. Now as I transition into a professional member, I hope to create meaningful relationships with fellow engineers in the region, just as I did within the collegiate community.

I feel that Secretary is a great position for a new professional member, and facilitates new members meeting their peers. By serving as Secretary, I hope to use my past collegiate friendships and new professional network to create connections between sections, and provide resources for collegiate members with questions about SWE, academia, and industry. This would contribute to my long-term mission of contributing to the mentoring environment between professional and collegiate members within SWE.

Candidate History

My involvement started as mentoring chair at the University of Florida. By changing the program format I was able to increase participation from 42 to 96 students. I held social events and weekly challenges to keep members involved. Next, I was elected as the Internal Vice President, which allowed me to help begin our first design team for the Rube Goldberg Competition. In the middle of the fall semester I stepped up to be the President. Although faced with adversity at the beginning, I found my stride. I was able to reformat our Engineering Pageant, secure an author as a speaker, and work with my E-Board to create position outlines. I believe that through my experience of abruptly becoming president I grew greatly as a leader. Currently, I hold the position of Region Collegiate Senator. I have greatly enjoyed seeing this organization from a completely different angle.

Treasurer Candidate

Christine Cathcart

Section of nominee

Charlotte Metrolina

Current Leadership Roles:

- Region Treasurer-D, D - Region (5/30/2014 - Present)
- Counselor-D087, D087 - West Florida, University of (6/31/2016 - Present)
- Member, Fellows (2/31/2016 - Present)
- Member, Leadership Coaching Committee (5/30/2016 - Present)



Past Leadership Roles:

- Member, Leadership Coaching Committee (5/30/2011 - 5/29/2016)
- VicePresident-D002, D002 - Charlotte-Metrolina (5/30/2013 - 5/29/2014)
- Counselor-D073, D073 - Tuskegee University (5/30/2011 - 5/29/2012)
- President-D002, D002 - Charlotte-Metrolina (5/30/2008 - 5/29/2011)
- Region Treasurer-D, D - Region (5/30/2010 - 5/29/2011)
- Finance Committee Member – FY08, FY09, FY10
- Region Senator-D, D - Region (5/30/2009 - 5/29/2010)
- COR Alt Rep, FY08
- COR Representative, FY06, FY07
- Mega Issues FIG Chair, FY07
- Deputy Director Region D, FY03, FY04
- Leadership Coach, Region D; FY01-FY03
- Career Guidance Chair, FY00, FY01
- Various Sections: Section Treasurer, President, VP, Secretary; FY97-FY01
- SAC Counselor and Advisor Liaison, FY00
- SAC Member, FY95-FY99
- Region Student Conference Chair, FY86

Candidate Statement

The opportunity to serve Region D as their Treasurer would be a privilege again. My experience would allow for a smooth transition and continuity for the Region. One focus for me would be organizing the finances to aid in the financial assessment. The financial stability of the Region has been helped with the implementation of investment and budgeting strategies that need to be documented and adopted by the COR. The budget and expense tracking for the year would be my top priority.

Treasurer Candidate

Christine Cathcart (Con't)

Candidate history

Chris has served as all Section officers, Region Lieutenant Governor, Region Treasurer, Region Leadership Coach, Society Chair, and Society Committee member. She started as a member in the KSU Section and moved to the St. Louis Section when she began working after graduation. In that Section she served as committee chair and treasurer. She then moved to Wichita and served as President, Secretary, and Section Representative. She relocated to Charlotte and has served for the Charlotte Section as President, Vice-President, and Section Representative. In this time she has also served as the Society Career Guidance Chair, Society Graduate Student Committee Chair, Faculty Advisor and Counselor Liaison, Region D Treasurer, Region i Collegiate Coordinator, and Leadership Coach for Region D. She served in many other positions with Region Conference committees, finance committees, and task forces that have been called through the Society. Chris is the current Region D Treasurer.

Collegiate Senator Candidate

Grace Devine

Section: D061 Georgia Institute of Technology

Previous Positions Held:

- GT Section President 2016-2017
- GT VP of Membership 2014-2015



Candidate Statement:

If I were to be selected as Region Collegiate Senator, I would work with our Collegiate Representatives to increase communication across our sections. I believe that collegiate sections can truly learn from each other, and improve membership recruitment and retention by sharing ideas and suggestions across sections. Smaller sections can learn from larger sections and even the larger sections can learn from a smaller section's community like-feel and attention to individual members. We can all learn from each other to increase our members' involvement in SWE.

In addition, as the voice for the collegiate sections, I want to make sure that I am representing them as best as I can by voicing the needs of collegiate sections, and by suggesting changes in the strategic direction of the Society that considers the needs of, encourages, and supports all collegiate sections. Also, as someone who will be informed on different Society matters through senate meetings and other communications, I believe it is vital to communicate what is going on from the top-down on a monthly basis, so that collegiate sections can better prepare themselves for change and learn more about the Society.

Candidate History:

I have been involved with the Georgia Tech section since Fall of 2013, and am in my 4th year at GT. In my 2nd year, as VP of Membership, I was responsible for planning our largest recruitment event, which we call "Tea with the Dean", and brings in an average of 200 new members to our section every year.

Since returning to campus from my co-op with Toyota last Spring, I have taken on the role as President of GT SWE. I work with 9 other executive members and 40+ chairs to control operations over outreach, membership, technical and professional development, industry relations, finances, and communication. Being the President of such a large section (with 780 members), it has allowed me to see where a lot of improvements can be made on an individual section level and how that can be potentially applied on the regional or society level.

Collegiate Senator Candidate



Natalie M. Hahn

Section D084 , Embry-Riddle Aeronautical University

Previous Positions:

Sectional: President, April 2016 – January 2017

Secretary, December 2015 – April 2016

Candidate Statement:

When I entered college as an engineering student, I was extremely worried about the lack of females in my field, as many are. I grew even more nervous upon realizing that my school held a male-to-female ratio of 8 to 2.

However, after talking briefly with a female engineering student in her junior year, who happened to be the president, I was invited to the first Society of Women Engineers meeting for the semester. It didn't take me long to realize that this was what I had been waiting for.

Since then, over the past two years, SWE has been an integral part of my life and making my college experience as rewarding as it could be. I feel at home in a college that I never thought I would; I have friends from all over the world, with various backgrounds and cultures, who have made my life more diverse by having them in it.

By holding a regional position, I want to ensure that other females don't feel left out. I want to vote on the bylaws, interact with the planning committees and Board of Trustees, and ensure that other women experience the diversity I have enjoyed.

Candidate History:

I have been a part of planning, coordinating, and executing various events with Embry-Riddle's section. As Secretary, I planned our largest Introduce a Girl to Engineering Workshop including 92 3rd-5th-grade girls and over 20 volunteers. I helped execute a collaboration with Daytona Speedway, which earned over \$1,500.

This past semester, I am beyond thrilled to say that I, along with the other three executive board members, grew our organization by almost 45% in members, and over 50% in active members. Our section focused on outreach where we assisted NASA in teaching families about science and space, and worked with our professional section with Wow! That's Engineering! Finally, we grew our National Conference attendees from 17 to 21, with a generous travel grant thanks to Rockwell Collins.

I have been beyond thrilled to be a part of these milestones for what is still a relatively small section.

Collegiate Representative Candidate

Jenna Newman

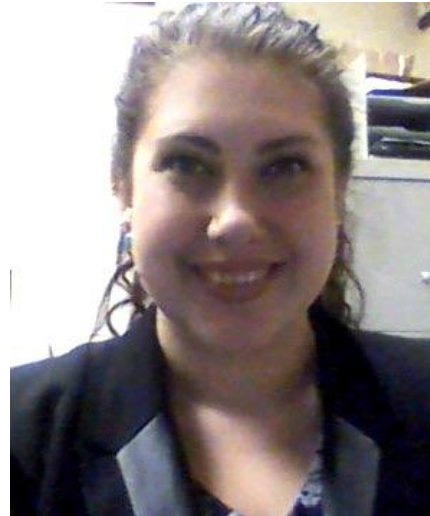
Section/School: D069, University of South Florida

Previous positions:

President - Current

Vice President

Secretary



Candidate Statement

Since joining SWE at the collegiate level, I have seen the organization grow. Not only was it within the University of South Florida, but at the national level as well. Moving to make changes in SWE is something I would like to get involved with, especially this year with the transition of positions. I hope to be able to ease the transition SWE is in the process of establishing. In moving into the regional level, I would be able to continue my involvement in the society. As I go into my last year as a collegiate, I believe this would be the perfect transition from college to a professional SWE member

Candidate History

Over the past four years, I have been involved with the collegiate section at the University of South Florida. I began as a member in 2013 and moved to becoming secretary in spring 2014. After that year, I progressed to Vice President in spring 2015 and President in spring 2016. Through my time on the executive board, I have come to realize the importance of being timely informed of events, keeping records straight, and communicating with members and those you are leading. At the collegiate level as President, I oversee 13 executive board members and ensure they have the tools necessary to be successful.

Collegiate Representative Candidate



Catharina S. Atalaia Santos

Section/School: The University of Alabama, Tuscaloosa, D050
Previous Positions: UA SWE Educational Outreach Chair, 2014
UA SWE Secretary, 2015-2016
Region D SWEFL, 2015-2016
UA Section President, 2016-2017

Candidate Statement:

Since I became an active member of the Society of Women Engineers during my freshman year, I have had the privilege of meeting and working with countless strong, talented, and inspiring women. These experiences helped form me and allowed me to evolve into the confident aspiring engineer I am today. Whenever I had a concern, idea, or question, my peers listened willingly, and made my voice feel heard. I hope I will receive the chance to offer well-established and smaller sections, as well as individual members, the kind of encouragement and support I received. I also aim to facilitate proper communication between region government, collegiate officers, and members, with the aim of, guaranteeing transparency and insight into the region happenings. While the Society of Women Engineers might be undergoing significant structural changes in the near future, focusing on our core values will make this transition well worth the effort.

Candidate History:

During the most recent semester, I learned that leadership does not mean taking on all tasks by oneself. Instead, leadership calls one to appropriately hand responsibility to others, allowing them to advance in their professional and personal development. As president I intended to create a positive environment in which ideas grow into plans. Over the past few months, I encouraged numerous companies to attend and sponsor general section meetings, ensured that the University of Alabama collegiate section was able to sponsor sixteen members to attend and enjoy WE16, and informed the UA SWE Advisory board about the state of their collegiate counterpart. While I truly enjoy serving as section President, leadership also means lifting others up and encouraging them to step in one's footprints. Approaching the end of this fiscal year, I hope to be granted the opportunity to serve at the region level.

Collegiate Representative Candidate

Jessica Jiang

Georgia Institute of Technology
RCS (FY16), RCR (FY17)



Candidate Statement

I would like to continue my role as RCR because it has been a pleasure serving as a liaison between the section presidents and professionals. This role has not only taught me how important it is to be communicative and organized, but also has given me a greater appreciation for the growth and change the Society of Women Engineers has gone through over the years and will continue to experience. This role has also allowed me to be more engaged among all the sections and has allowed me to be more helpful in terms of helping spread ideas among sections so that individual sections can grow stronger and thus create a stronger and more connected region and society as a whole. As I am familiar with the tasks and responsibilities of an RCR, if I am able to continue my role, I would hope to increase the number of participating sections in the region so that they may be in good standing and fully realize the benefits and wonders of being actively engaged in the Society of Women Engineers. In any role I serve, I look forward to another amazing year of being a woman in the Society of Women Engineers.

Candidate History

I have been a member of SWE since the start of my college career. In my first year as a member of SWE, I participated and led teams in various volunteer events, such as our Middle School Outreach and other on-campus events. I served as FY16 Region Collegiate Senator where I had the opportunity to share ideas with fellow collegiate members nationwide and work to improve our respective collegiate sections. This year, as a Region Collegiate Representative; I helped increase the number of schools in good standing while working with the parallel RCR. As RCR, I have reached out to sections not in good standing by contacting the presidents one-on-one to help them with any questions they may have to help them improve their standing and reach their goals. I continue to be an active member by guiding young women in Science and Engineering and by guiding my SWE mentee.

Collegiate Communications Editor Candidate



Elizabeth Hartzog

The University of Alabama

Positions held

- Webmaster
- WOW That's Engineering Materials Coordinator
- Secretary

Candidate Statement

I would love to be the Regional Collegiate Communications Editor because I believe that technology is the fastest growing way for us to easily reach members, advertise SWE, and inspire potential STEM candidates in our local communities. It is extremely important to have up to date social media accounts since so many rely on the Internet to find out information. Having spent the past few years serving the collegiate section of SWE, I am eager to get more involved at the regional level and meet others in the area. I am graduating next December and definitely plan on continuing my involvement at the professional level and I believe this is the best next step to further my SWE career.

Candidate History

As Secretary of SWE at the University of South Alabama, I was responsible for recording all the minutes at each meeting as well as helping plan the many social events on campus and the annual trip to the National Conference. As a sophomore, this position helped to demonstrate how the executive board of SWE works and how beneficial it is for one to be involved in SWE throughout their whole college career. As the WOW That's Engineering Materials Coordinator, I was responsible for organizing & purchasing the materials needed for the annual event and making sure the materials room ran accordingly on the event day. As the Webmaster, I am responsible for sending out the weekly emails with current information pertaining to our chapter and other campus events. I am also in charge of all social media accounts and ensuring those stay up to date with our planned activities.